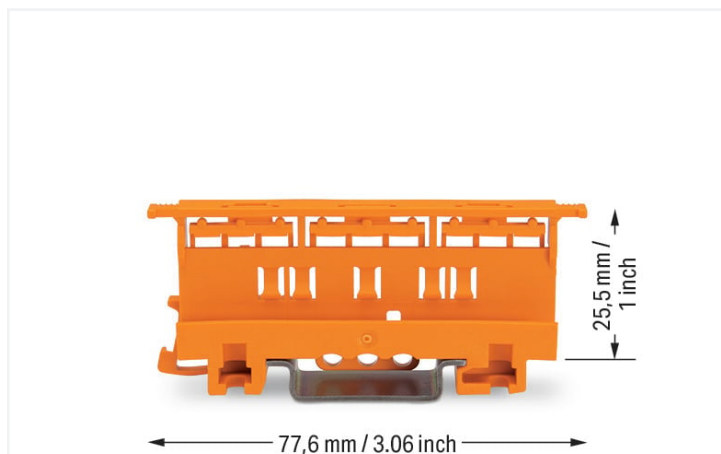


## Data Sheet | Item Number: 221-500

Suport de montaj; Seria 221 - 4 mm<sup>2</sup>; pt mont. pe șină DIN 35/montare cu șurub; portocaliu

<https://www.wago.com/221-500>



Color: ■ portocaliu

### Physical data

Width	17,5 mm / 0.689 inci
Height	77,6 mm / 3.055 inci
Depth from upper-edge of DIN-rail	25,5 mm / 1.004 inci

### Mechanical data

Mounting type	DIN-35 rail Screw mount
Suitable	for 2-, 3- and 5-conductor 221 Series Splicing Connectors (4 mm <sup>2</sup> )

### Material data

Note (material data)	<a href="#">Information on material specifications can be found here</a>
Color	portocaliu
Material group	I
Insulation material	Polyamide (PA66)
Flammability class per UL94	V0
Fire load	0.294 MJ
Weight	9.6 g

### Commercial data

eCl@ss 10.0	27-14-11-92
eCl@ss 9.0	27-14-11-92
ETIM 8.0	EC002848
ETIM 7.0	EC002848
PU (SPU)	50 (10) Buc.
Packaging type	Box
Country of origin	CN
GTIN	4055143421942
Customs tariff number	39269097900

## Environmental Product Compliance

RoHS Compliance Status

Compliant, No Exemption

## Downloads

### Documentation

#### Bid Text

221-500	19.02.2019	xml 2.72 KB	<a href="#">↓</a>
221-500	23.01.2019	docx 14.58 KB	<a href="#">↓</a>
ausschreiben.de 221-500			<a href="#">↓</a>

## CAD/CAE-Data

CAD data	CAE data
2D/3D Models 221-500 <a href="#">↓</a>	EPLAN Data Portal 221-500 <a href="#">↓</a>
	ZUKEN Portal 221-500 <a href="#">↓</a>

## 1 Compatible Products

### 1.1 Optional Accessories

#### 1.1.1 Marking

##### 1.1.1.1 Marking strip



#### Item No.: 210-833

Benzi de marcaj; 25 m pe rolă; Lățime de 6 mm; simplu.; Auto-adeziv; alb

### 1.1.2 Mounting adapter

#### 1.1.2.1 Mounting accessories



#### Item No.: 222-510

Adaptor cu cote șină DIN; în combinație cu suport de montare; 221-500 sau 222-500; pentru montare pe șină DIN 35; gri

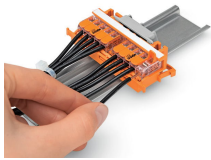


#### Item No.: 222-505

Placă pentru detensionare; pentru suport de montare; seria 221 sau 222, poate fi înclichetată

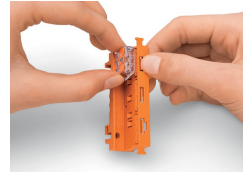
## Installation Notes

### Conductor termination



**CAGE CLAMP® connection:**  
Conductor termination with connectors fitted in a mounting carrier

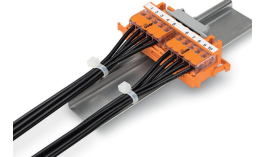
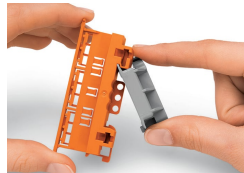
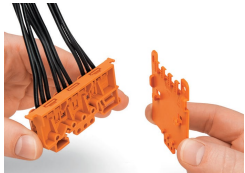
Removing a conductor.



Inserting a connector into the mounting carrier.

Inserting a connector into the mounting carrier.

Removing a connector from the mounting carrier.

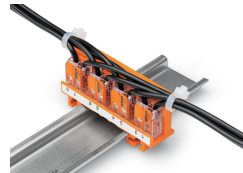
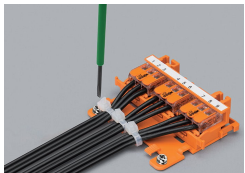


Securing a strain relief plate (222-505) to the mounting carrier.

Snapping the angled DIN-rail adapter (222-510) onto the mounting carrier.

Horizontal mounting on DIN-35 rail using an angled DIN-rail adapter

Horizontal mounting on DIN-35 rail using an angled DIN-rail adapter

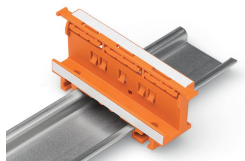


Horizontal screw mounting with strain relief plate on a flat surface

Vertical mounting with strain relief plate on DIN-35 rail

Strain relief via cable ties on the mounting carrier (transverse to the connectors' wiring direction) – clamping units labeled via marking strips (210-334)

Vertical screw mounting with strain relief plate on a flat surface



Mounting carrier on a DIN-35 rail

### Testing



Testing connectors via test slots on top of the carrier.

Subject to changes. Please also observe the further product documentation!

Current addresses can be found at: [www.wago.com](http://www.wago.com)